

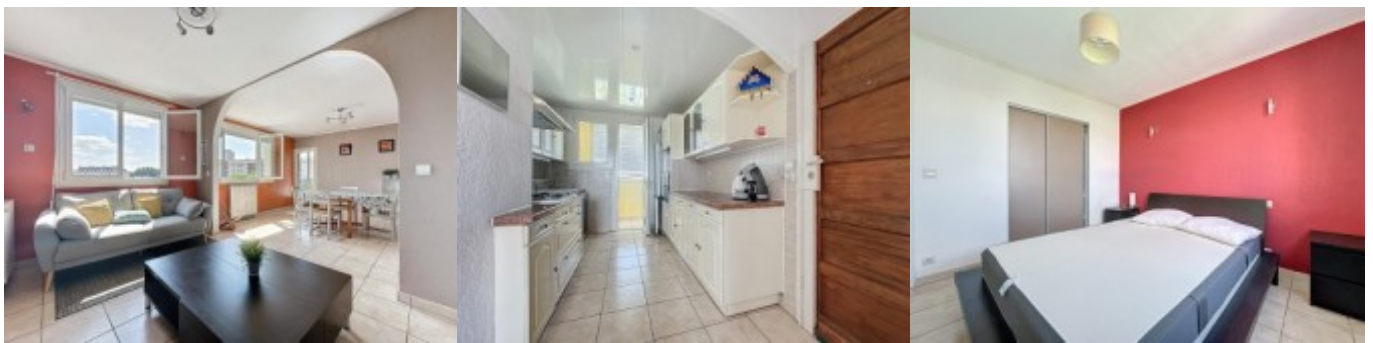


16, Avenue de la Marne - 65000 TARBES
Tel.: 0033 (0) 562.345.454. - Fax : 0033 (0) 562.346.660
abafim.it
Contattaci anche tramite e-mail su contact@abafim.com

2 bedroom apartment

106 000 € [Commissioni addebitate al venditore]

- Riferimento : AF26835
- Numero di stanze : 4
- Numero di camere da letto : 2
- Superficie abitabile : 70 m²
- Superficie del terreno : 935 m²
- Imposta patrimoniale : 1 126 €



Located in Tarbes, between Marcadieu and Arsenal, this bright and spacious 72 m² apartment is on the 4th and last floor of a secure block of flats. It is composed of a living room, a dining room, a kitchen, a loggia, two bedrooms, a bathroom with a toilet and a cellar.

Situated in a quiet and well-kept block of flats consisting of 20 lots spread over two buildings with interphones. The cellar (9 m²) is in the basement and the apartment faces east-west. Ideally situated minutes on foot from the centre of town.

To the right of the front door is a fitted kitchen (6.82 m²) with a loggia (5.45 m²) and to the left is a huge living-cum-dining room (25.66 m²) that gives onto the balcony.

A hallway leads to the sleeping area, composed of a bedroom (12.15 m²) with a built-in cupboard, another bedroom (11.61 m²) with a built-in cupboard and access to the balcony and then a bathroom with a toilet (5.22 m²).

The apartment is bright thanks to its dual aspect, its many windows and its high position.

Windows are double-glazed and PVC, with roller shutters.

Heating and hot water are provided by a mains gas-fired boiler.
The block of flats is connected to mains drainage.

If you're looking for a main home or a property to let out, this 4 room apartment is perfect.

The apartment represents 524/10000ths and the cellar represents 15/10000ths.
The co-ownership fees are 850 euros a year.
There is no ongoing procedure for the co-ownership.

Located 3 minutes on foot from the market, all businesses and from schools; 5 min from the train station; 10 min from the university; 35 min from Pau; 1 hr from ski slopes; 1 hr 30 from the Atlantic Ocean; 3 hr from the Mediterranean Sea.

CONSUMO ENERGETICO : D (206)

GAS SERRA : D (44)